

ABC-NORDIC[®]

the ceramic system
for facade and roof

ABC KERAMIK
BERENTELG





About us

The ABC Clinker Group

We, the ABC Clinker Group, are a family-owned business in the brick and tile industry located in Germany. We look back on around 130 years of experience. Our product range is based on one of humans’ oldest natural building materials - the clay.

Today, our ABC Clinker Group is in the fifth generation and manufactures various brick products at six locations in Germany. Our product portfolio includes facing bricks, brick strips, clay pavers, clinker roof tiles and floor ceramics.

Sustainability

We produce sustainable natural building materials as environmentally friendly as possible. For this reason, we focus on low energy consumption in production with gentle, efficient use of resources and low material consumption.

The natural slate clay of the Tecklenburger Land forms the basic material of our ABC products - a valuable, genuine natural product!

In this context, we follow the “Cradle to Cradle” concept, which ensures that all substances produced in biological and technical cycles serve for subsequent cycles. This explains the meaning of cradle to cradle. Products are managed in a closed cycle from their creation to the end of their life cycle. After their use are 100% reused for the development of the next product.

Innovation

The renaissance of bricks has shown that the brick as a building material has again successfully adapted to the new requirements and tasks of its time - that is why we are already working today on the brick products of tomorrow.

About ABC-NORDIC®

Ceramic System

The ceramic system ABC-NORDIC is a homogeneous, durable “brick tank” with traditional material in a modern brick design. It is light and easy to use. ABC-NORDIC is quick to process, durable and suitable for renovations and new buildings. It combines the materiality of the facade and the roof so that the buildings appear to have been cast in one piece.

- open to diffusion
- graffiti-resistant
- recyclable
- made from natural materials
- available in different colours and formats on request

Product features

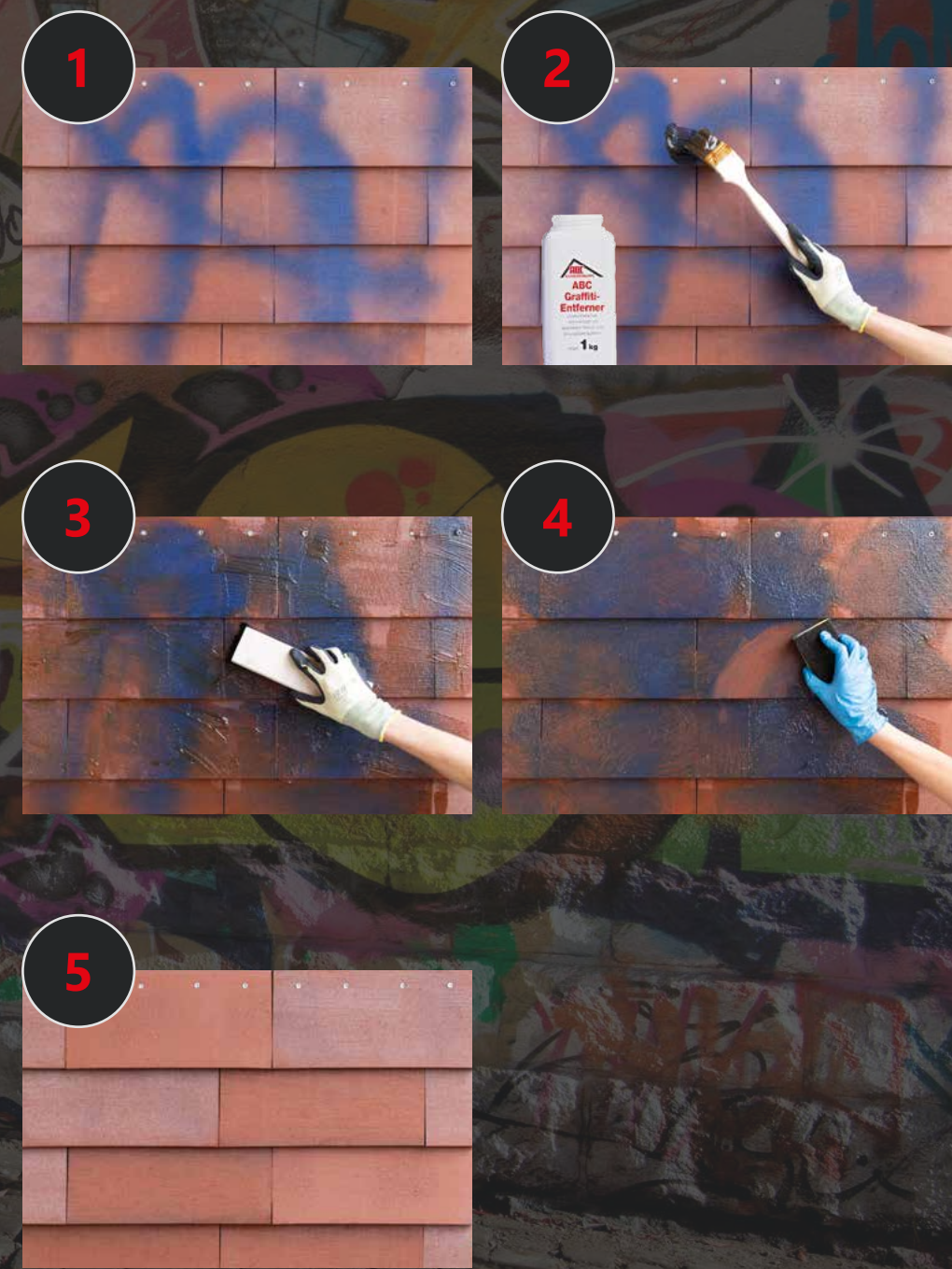
-  frost-resistant
-  environmentally friendly
-  water absorption ≤ 6 %
-  colourfast
-  weatherproof
-  fire behavior: euroclass A1
-  standardized

Formats

Length	400 mm
Width	175 mm
Height	30 mm
Material thickness	approx. 15 mm
Weight	approx. 2,8 kg
Lath spacing	approx. 140 mm*
Piece per m²	approx. 18 pieces

Length	400 mm
Width	250 mm
Height	30 mm
Material thickness	approx. 15 mm
Weight	approx. 3,7 kg
Lath spacing	approx. 215 mm*
Piece per m²	approx. 11,75 pieces

Further formats on request.
The correct lath spacing must be determined at the construction site.
Screw holes must be sufficiently covered.



ABC-Graffiti-Remover

ABC-NORDIC® IS GRAFFITI REMOVABLE

Graffiti can be easily removed from ABC-NORDIC® with ABC-Graffiti-Remover. It has become part of the appearance of our cities and villages, but it is rarely welcome. On the one hand, they rarely meet the aesthetic taste of the house wall owners and on the other hand their removal is usually very costly. Although it is hardly possible to prevent the mostly night-time spraying activities, by choosing the building material for the exterior wall one can at least ensure that they disappear as quickly as they came and after their use they are 100% reused for the development of the next product.

Thanks to the extremely high firing temperatures in the manufacturing process, ABC-NORDIC® has a surface that reliably prevents the penetration of all kinds of moisture - from rain or paint. That means: Graffiti remains on the surface and can be removed with the ABC graffiti remover fast and effortlessly and above all without any residues.



Colours

Caldera*



Loogsand*



Rostrot



Fehmarn*



Sortings marked with * can only be produced for the object sector if larger quantities are purchased. If you have any questions, please do not hesitate to contact us.

Variations in colour, play of colours and proportions may be possible due to production/printing reasons.

Colours

Corten



Narvik



Tromsø*



Trondheim*



Sortings marked with * can only be produced for the object sector if larger quantities are purchased. If you have any questions, please do not hesitate to contact us.

Variations in colour, play of colours and proportions may be possible due to production/printing reasons.

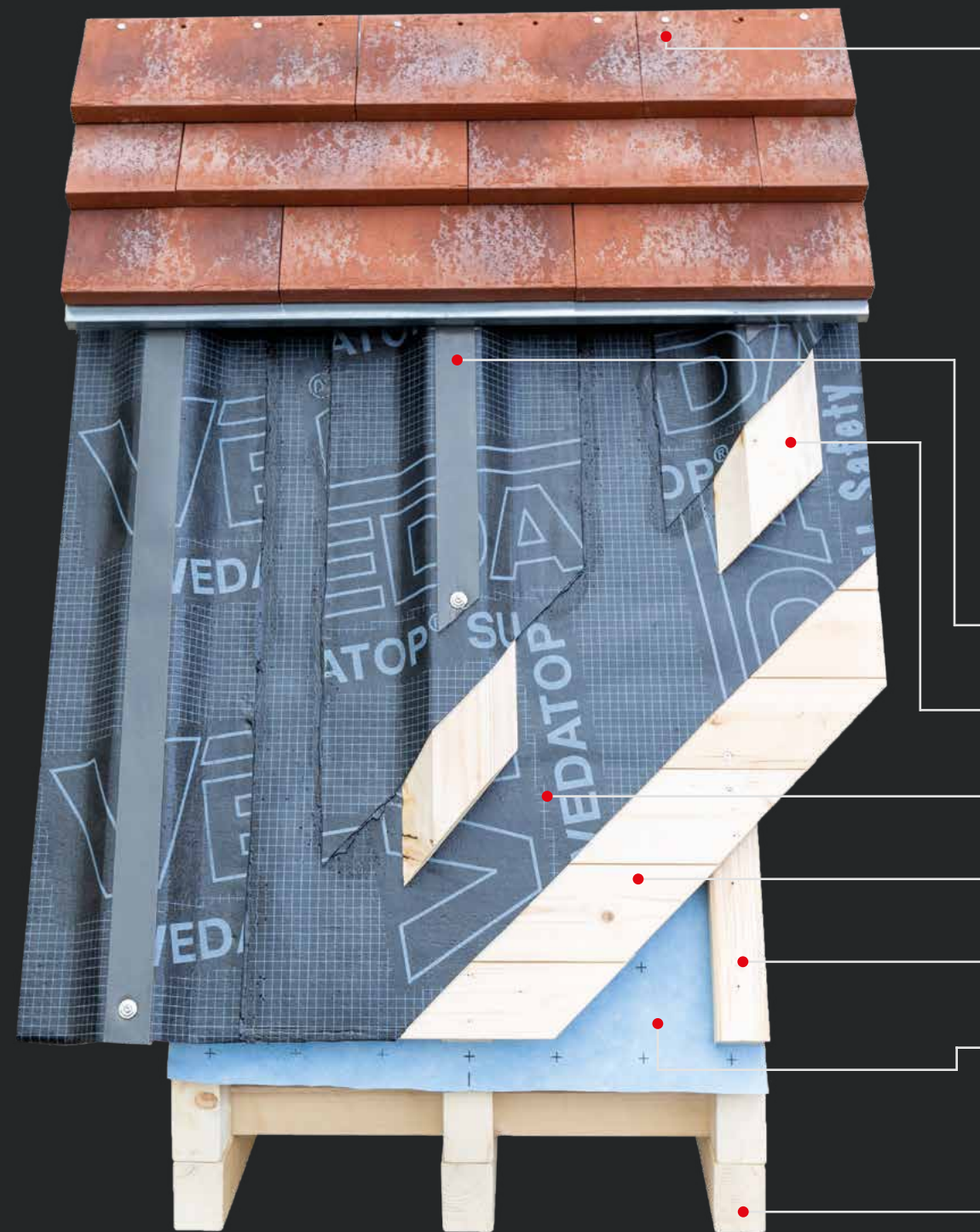
Vulcano



Sortings marked with * can only be produced for the object sector if larger quantities are purchased. If you have any questions, please do not hesitate to contact us.



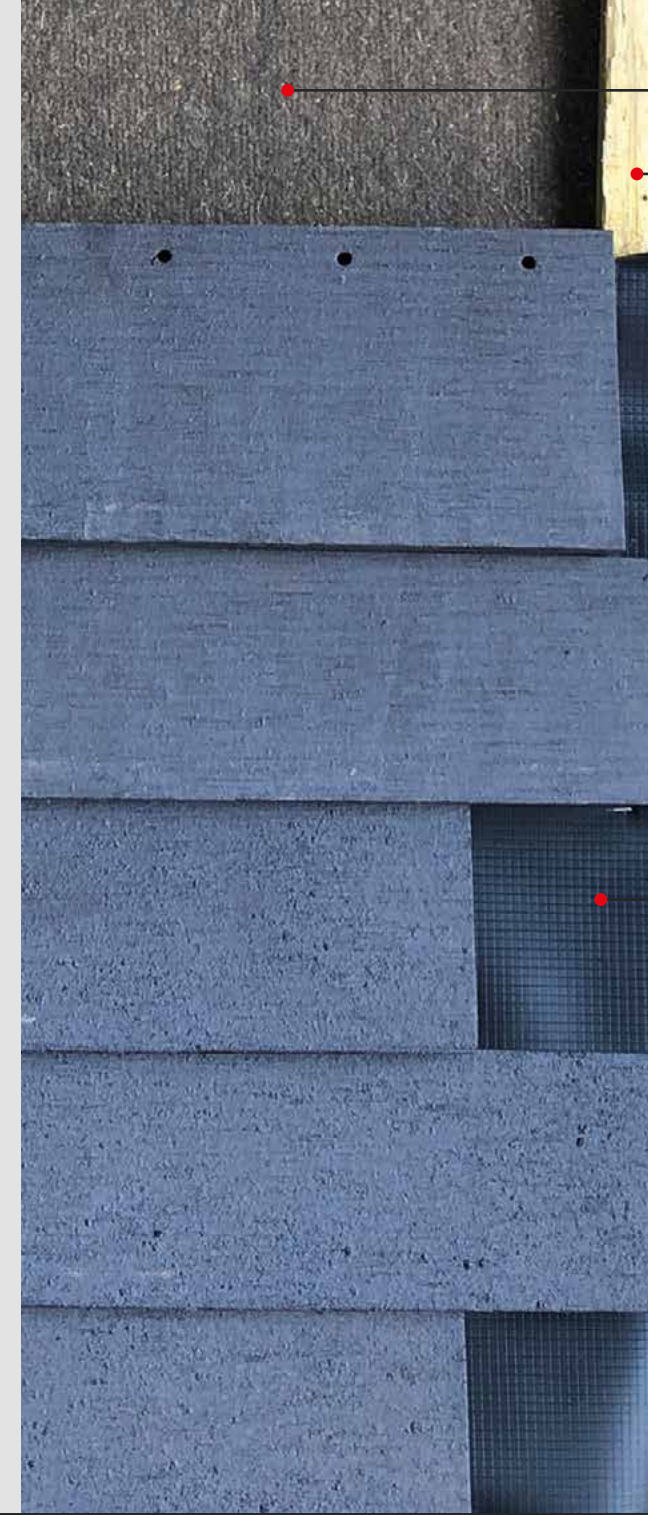
Variations in colour, play of colours and proportions may be possible due to production/printing reasons.



Variant of construction

- 1 Stainless steel countersunk-head screw 4.5 / 45 mm
- 2 Nail sealing tape
- 3 Wedge plank
- 4 Waterproof surface
- 5 Wooden lagging
- 6 Counter battens
- 7 Roof membrane
- 8 Timber rafter

The photos are intended as a suggestion.
We are not liable for the installation of ABC-NORDIC®.

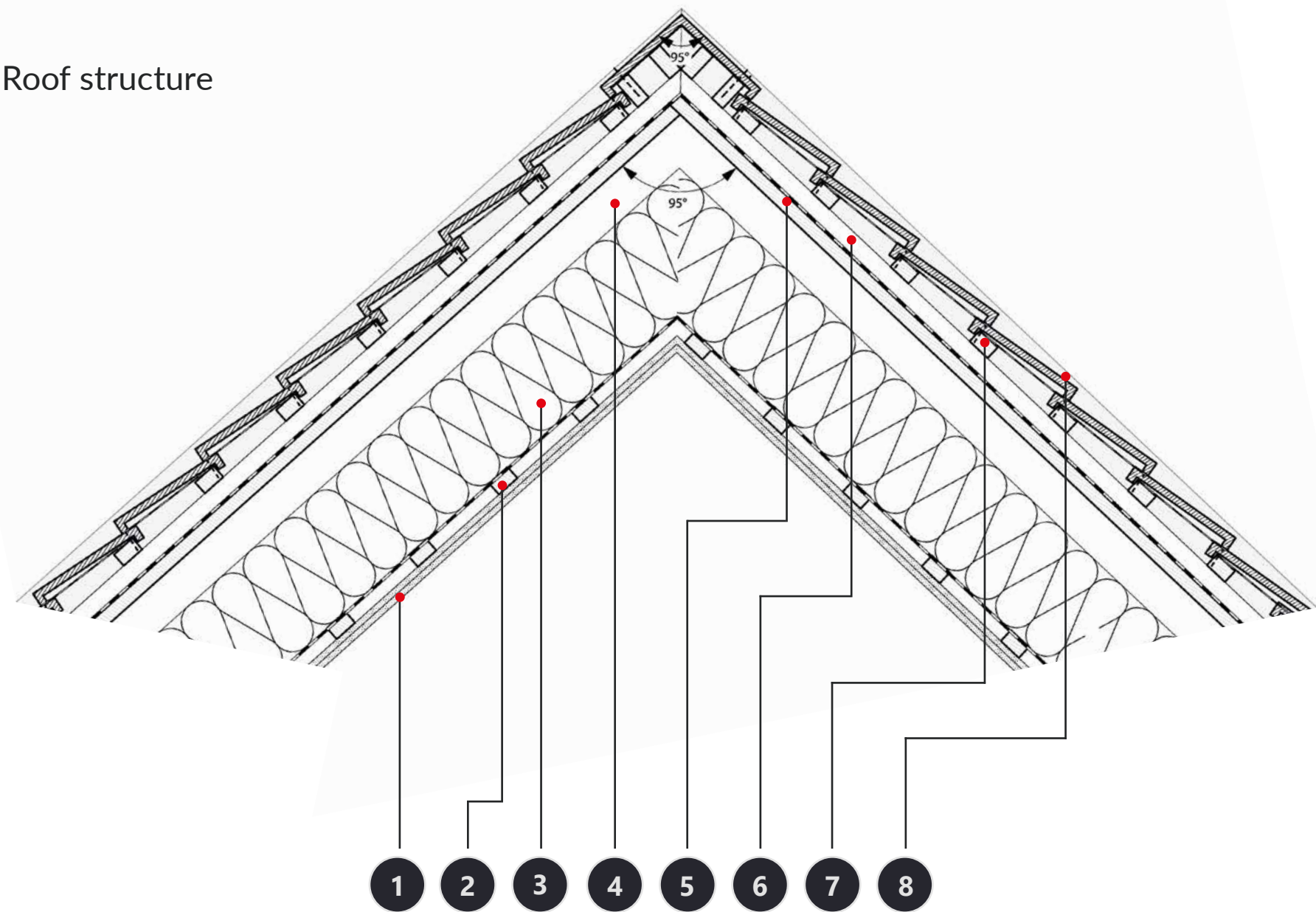


Variant of construction

- 1 Asphalttreated chipboard | Celit 4D, ISOPROC
- 2 Counter battens / installing with wire pins
- 3 Delta barrier film 17.5 / 25 cm

The photos are intended as a suggestion.
We are not liable for the installation of ABC-NORDIC®.

Roof structure



Drawing: KBNK Architekten, Hamburg

The photos are intended as a suggestion.
We are not liable for the installation of ABC-NORDIC®.

Roof structure

- 1 Gypsum plasterboard
- 2 Battens
- 3 Thermal insulation
- 4 Timber rafter
- 5 Wooden cladding and waterproof sealing (Delta barrier film)
- 6 Trapezoidal sheet with waterproof sealing and Nail sealing tape/air gap
- 7 Battens
- 8 ABC-NORDIC® tile



The photos are intended as a suggestion.
We are not liable for the installation of ABC-NORDIC®.

ABC-NORDIC® tile



Front view



Side view



Ridge tile



The photos are intended as a suggestion. We are not liable for the installation of ABC-NORDIC®.

Details

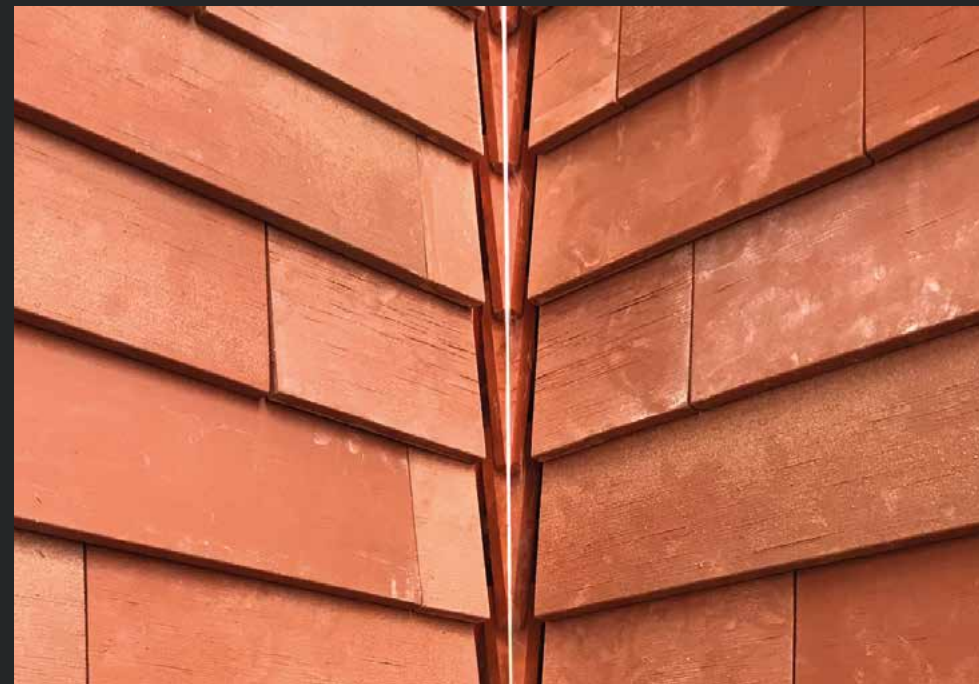
Outside corner obtuse



Outside corner acute



Inner corner



Windowsill



The photos are intended as a suggestion. We are not liable for the installation of ABC-NORDIC®.

Details

| Straight cut



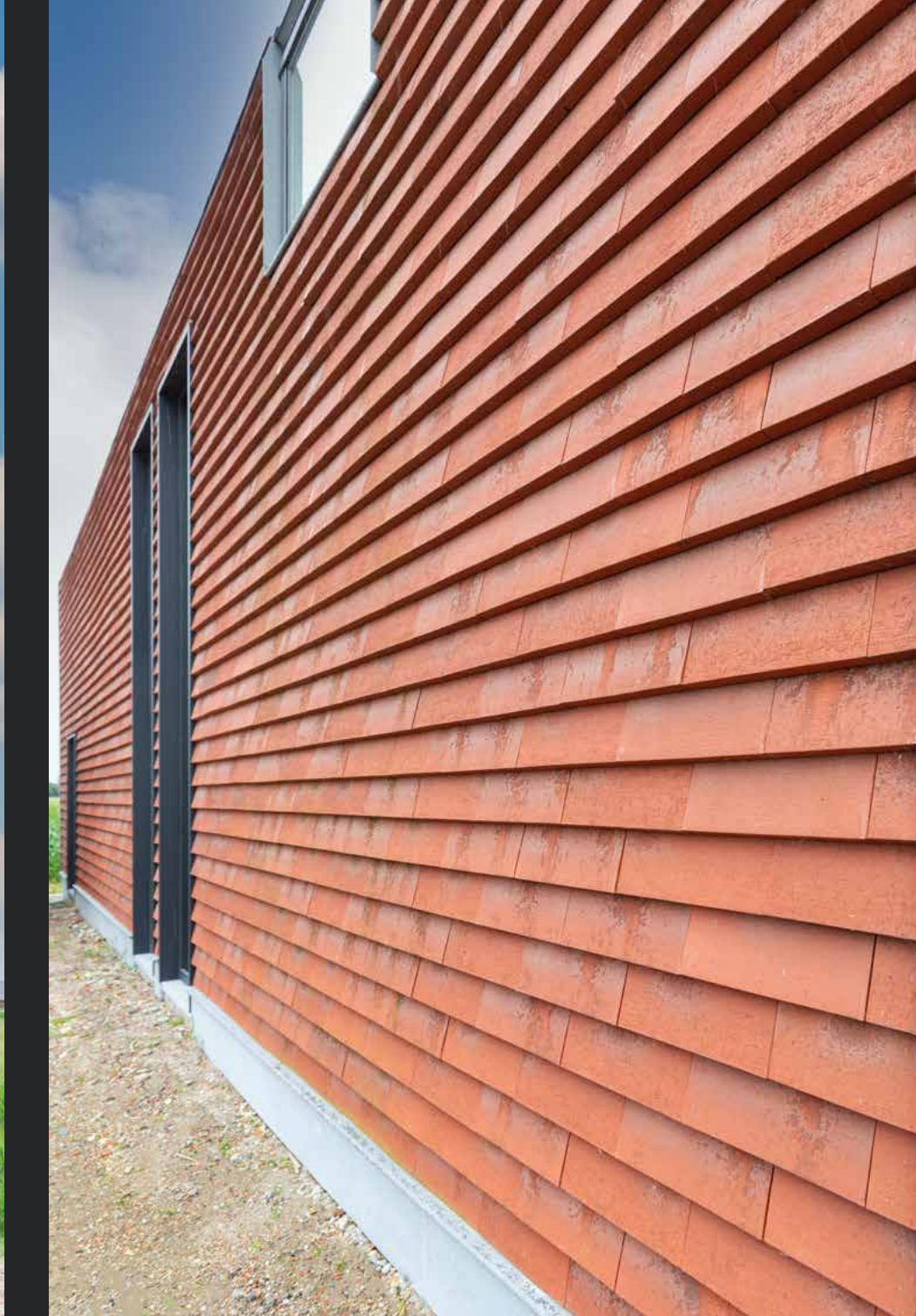
| Snow guard



Assembly



The photos are intended as a suggestion. We are not liable for the installation of ABC-NORDIC®.



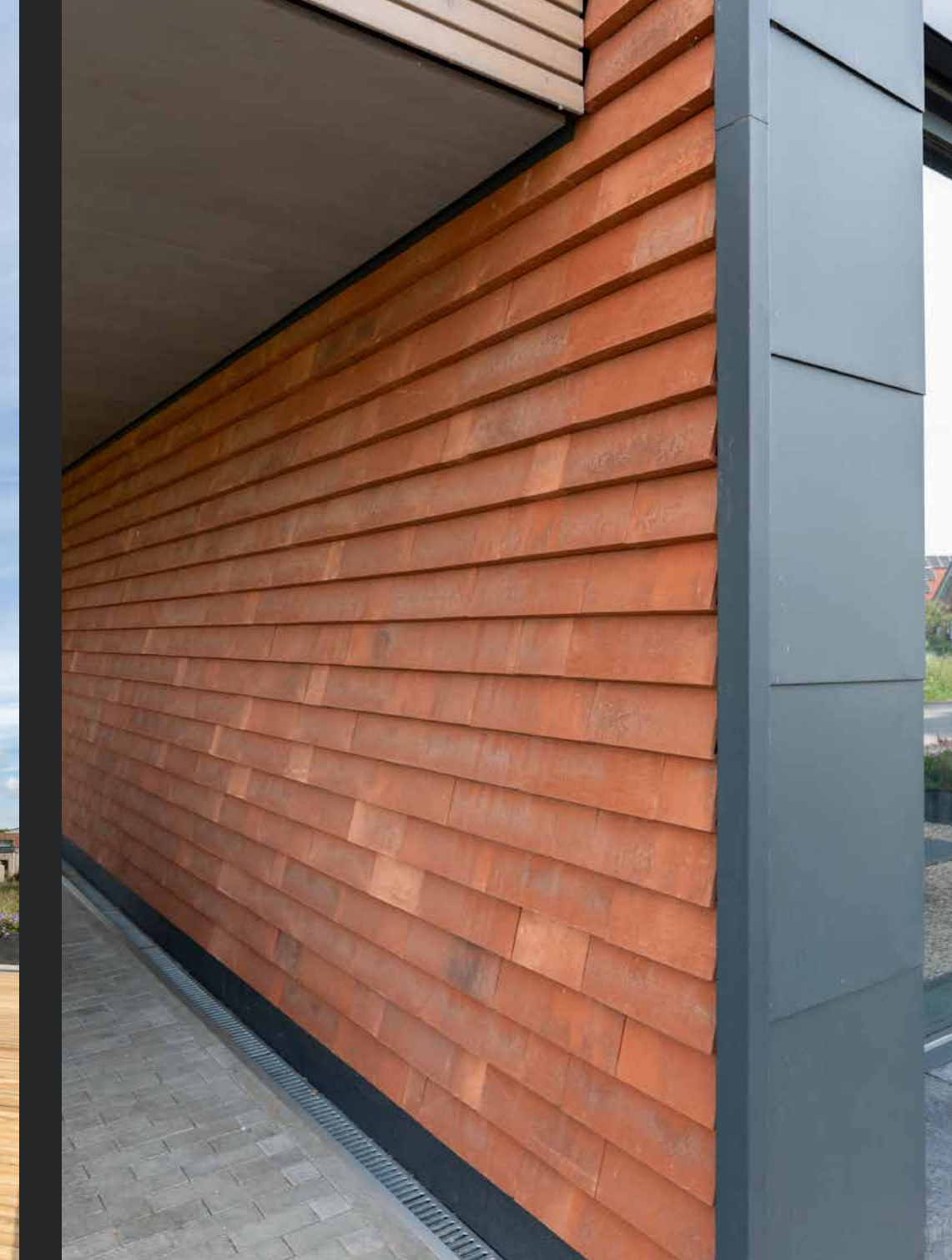


ABC-NORDIC® Caldera | Family house Zandvoort, Netherlands





Terhalle





ABC-NORDIC® special colour | Museum in Syke | Zimmerei Lübben, Garrel

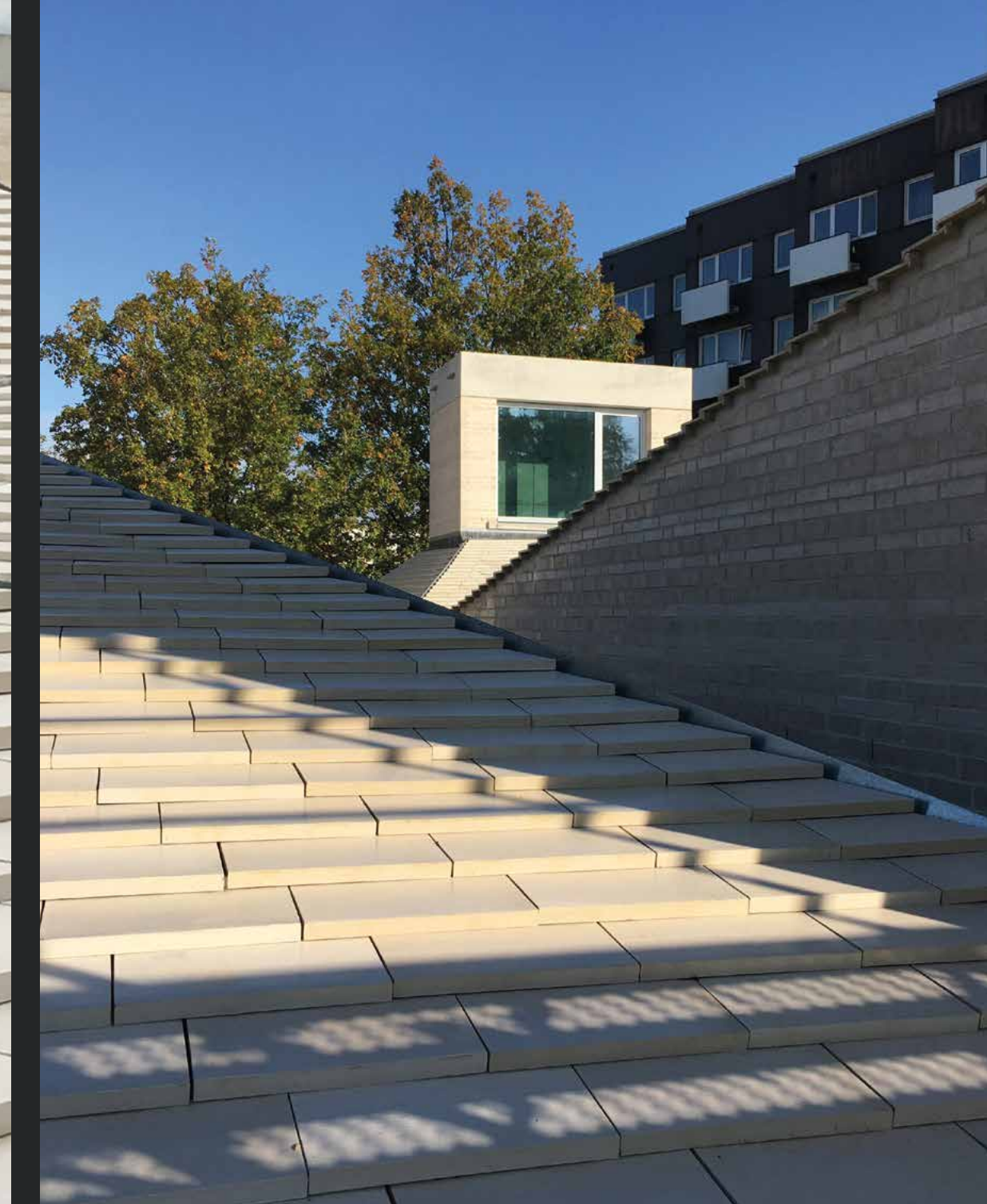


ZIMMEREI & TISCHLEREI
LÜBBEN
 Alle Holzarbeiten am Bau





ABC-NORDIC® Caldera | District centre Honnover-Stöcken





ABC-NORDIC® | Bau Munich



Our product range



Facing bricks Brick slips NORDIC Clay pavers Clinker roof tiles Floor ceramics



DIN EN 771-1
(DIN V 20000-401)
DIN 4051
DIN EN 1344



Production plants of the ABC-Klinkergruppe

Headquarter

ABC-Klinkergruppe
Grüner Weg 8 · D-49509 Recke
Tel. +49 (0) 54 53 / 93 33 0
abc@abc-klinker.de · www.abc-klinker.de

Klinker- und Keramikwerke · A. Berentelg & Co. KG

Klinkerwerk Hörstel
Dornierstraße 11 · D-48477 Hörstel
Phone +49 (0) 54 59 / 93 43 0
Show room „Ringofen“ in the Plant
Tel. +49 (0) 54 59 / 93 43 11

Klinker- und Keramikwerke · A. Berentelg & Co. KG

Klinkerwerk Schüttorf
An der Ziegelei 6 · D-48465 Schüttorf
Phone +49 (0) 59 23 / 96 00 0

Recker Ziegelwerk · Berentelg & Hebrok OHG

Mettinger Straße 135 · D-49509 Recke
Phone +49 (0) 54 53 / 9 30 50

Hollager Ziegelwerk · Berentelg & Hebrok GmbH & Co. KG

Hollager Straße 106 · D-49134 Wallenhorst-Hollage
Phone +49 (0) 54 07 / 8 30 40

KDW-Klinkerdachziegelwerk · GmbH & Co. KG

Ziegeleiweg 1b · D-49170 Natrup-Hagen
Phone +49 (0) 54 05 / 6 19 19 60

ABC-Keramik · H & R Berentelg GmbH & Co. KG

Industriestraße 10 · D-49492 Westerkappeln
Phone +49 (0) 54 56 / 93 47 0



ABC-Keramik

H & R Berentelg GmbH & Co. KG
Industriestraße 10
D-49492 Westerkappeln
Phone +49 (0) 54 56 / 93 470

www.abc-klinker.de



ABC **KERAMIK**
BERENTELG